

Black Aluminium Bridge Handle 108mm with M5 Thread

AHM5108B

108mm black aluminium matt powder coat pull handle with female M5 threads.

A combination of cast aluminium construction, machined threads and matt black, powder coated finish ensure the handle maintains an exceptional balance between durability and low weight.

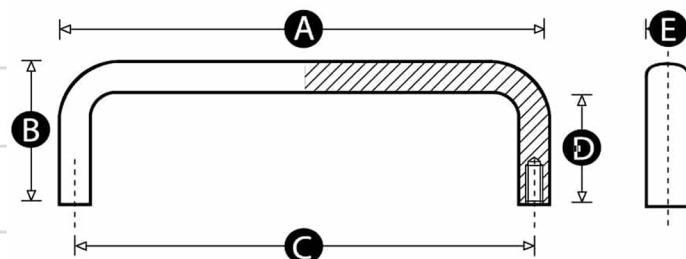
This is a popular handle in industrial settings. It is well suited to demanding environments and long, repeated use. It is often specified on processing and packaging equipment, on guards and drawers on heavy machinery, and inside construction equipment.



Technical Specifications

	Colour	Black
B	Height (mm)	40
A	Length (mm)	108
	Product Type	Bridge Handles
	Thread Size (D1)	M5
D	Thread Length (L) (mm)	32
E	Handle Width (mm)	12
C	Distance Between Fixing Centres (mm)	100

Dimensions



Copyright
lencol