

Black Nylon Bridge Handle with Brass Inserts 180mm x M6









NHBM6180

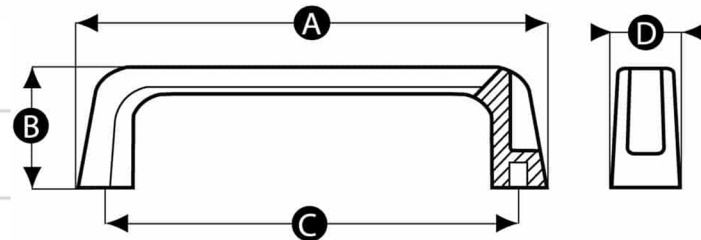
Comprises of a strong 15% glass filled nylon PA6 body and machined brass threaded inserts. This bridge handle is typically used in industrial settings on drawers, doors, lids, storage boxes and cabinets.



Technical Specifications

Dimensions

 Colour	Black
B  Height (mm)	46
A  Length (mm)	180
 Product Type	simple
 Thread Size (D1)	M6
 Thread Length (L) (mm)	36
D  Handle Width (mm)	27
C  Distance Between Fixing Centres (mm)	160



©Copyright
Rencol